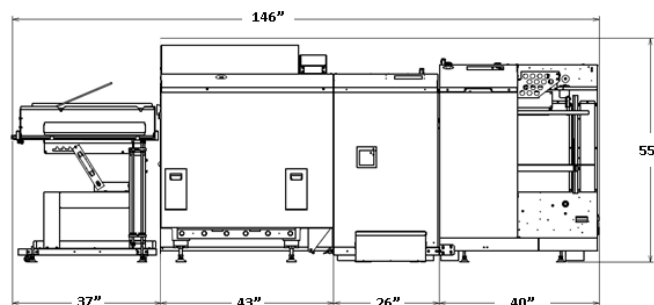


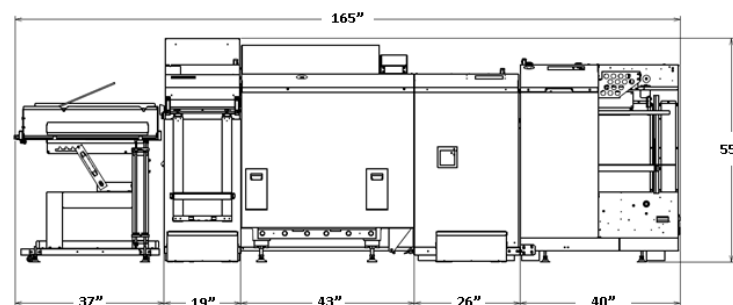
DSM-1000 B2 SPECIFICATIONS

Minimum Paper Size	(W) 12.51" x (L) 9.21" LEF (Long Edge Feeding Only) (W) 10.98" x (L) 16.53" LEF (Long Edge Feeding) / SEF (Short Edge Feeding)	
Maximum Paper Size	(W) 20.86" x (L) 29.53" SEF (Short Edge Feeding)	
Feed Capacity	15.74" (400 mm)	
	Without Separator	With Separator
Paper Types & Weights	Fine paper: 127.9 - 209.3 gsm Coated paper: 157 - 279 gsm Clay Coated: 270 - 600 gsm Chipboard paper: 400 (No.8) - 650 gsm (No.13) (No crease)	Fine paper: Pass through only Coated paper: 209.4 - 279 gsm Clay Coated: 270 - 600 gsm Chipboard paper: Pass through only
Gripper Margin	1.38" (35 mm)	
Die Board Size	32.28" x 20.47" (820 x 520 mm)	
Die Board Thickness	0.625" ±0.02" (16 mm ±0.05)	
Cutting Rule Height	0.937" (23.7mm)	
Other	Pressure Plate: 0.039" (1 mm)	Cover Sheet (Polyester film): 0.003" (0.1 mm)
Maximum Rule Length	196.85" (5,000 mm)	
Maximum Press Area	28.74" x 19.68" (730 x 500 mm) Sponges and other objects must fit within the press area	
Cutting Pressure	Over 40 tons	
Processing Speed	Up to 3,100 sheets/hr (depending on paper length)	
Configuration	DSM-1000 B2 Die Cutter + DSM-SF Feeder Unit + DSM-ST Stacker	DSM-1000 B2 Die Cutter + DSM-SF Feeder Unit, DSM-SP Separator Unit (Optional) + DSM-ST Stacker Unit
Dimensions	148.54" x 51.85" x 53.23" (3,773 x 1,317 x 1,352 mm)	164" x 57.28" x 54.92" (4,166 x 1,455 x 1,395 mm)
Weight	6,936 lb (3,146 kg)	With Separator: 7,302 lb (3,312 kg)
Options	DSM-SP Separator Unit and additional Separator Modules, Registration Mark Kit, Sub-Suction Unit, Chase for using existing dies, Stacker Conveyor	
Power Requirements	DSM-SF Feeder Unit: 100 - 204V 50/60Hz 8.0 - 2.7A DSM-1000 B2 Die Cutter: 200 - 240V 3W+PE(10%) 50/60Hz 20A/1 - (Peak 60A/1)	

Production rates are based on optimal conditions and may vary depending on stock and environmental conditions.



Configuration without separator unit



Configuration with separator unit

Duplo

DSM-1000 B2 Platen Die Cutter





Duplo

The leading provider of innovative precision finishing, print embellishment, and specialty finishing solutions. Contact us today to request samples or to get in touch with a finishing specialist.

Duplo USA Corporation

3050 S. Daimler St.
Santa Ana, California 92705
Toll Free: 1-800-255-1933
Telephone: 1-949-752-8222
Email: sales@duplousa.com

Find Us Online

-  duplousa.com
-  [linkedin.com/company/duplo-usa-corporation](https://www.linkedin.com/company/duplo-usa-corporation)
-  [facebook.com/duplousa](https://www.facebook.com/duplousa)
-  twitter.com/duplousa
-  [youtube.com/duplousa](https://www.youtube.com/duplousa)



For Your Short Run Packaging Needs

DSM-1000 B2 Platen Die Cutter

The DSM-1000 B2 Platen Die Cutter provides an efficient and automated solution for your short-run packaging jobs. Versatile and compact, the DSM-1000 B2 utilizes steel rule dies to produce a wide range of applications such as folding cartons, pocket folders, and POP displays with incredible precision. It processes press sheet sizes up to 20.8" x 29.5" up to 600 gsm, making it the perfect companion for your B2 inkjet, digital and offset presses.



Steel Rule Dies



TRADITIONAL STEEL RULE DIES

Ideal for larger and thicker paper, the DSM-1000 B2 utilizes steel rule dies to perform through cutting, creasing, perforating, and kiss cutting. Dies are custom-made, durable, and inexpensive to manufacture. They can be produced reasonably quickly, making them ideal for short-run projects. Set up time is also short with changeovers and adjustments made in a matter of minutes.

The counter plate provides the cutting and perforation surface for the die as well as the creasing matrix. The DSM-1000 B2 delivers exceptional crease quality and foldability, with and without lamination.



DSM-1000 B2 Platen Die Cutter with Stacking Tray

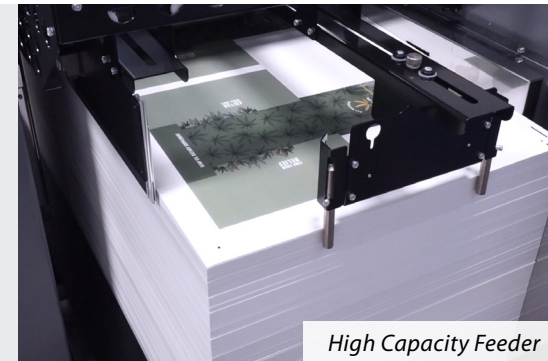


PC-BASED SETUP

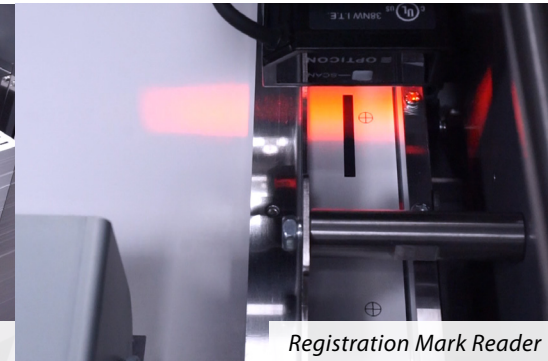
Designed to cater to operators of varying skill levels, the DSM-1000 B2 boasts a user-friendly graphic user interface. Set up jobs and make adjustments to cutting positions, pressure, and separation. Manage feeder, registration mark reader, and stacker conveyor settings with ease.

With the PC Controller, operators have the capability to save an unlimited number of jobs, preserving all settings and adjustments to facilitate job recall. A barcode reader can be added to read the barcode affixed to the die board and retrieve the corresponding job, minimizing make-ready time and increase operational efficiency.

A registration mark reader can also be added to adjust the sheet in X and Y directions for an added level of accuracy.



High Capacity Feeder



Registration Mark Reader



Stacker Conveyor



HIGH PRODUCTIVITY

Feeding up to 3,100 sheets an hour, the DSM-1000 B2 features an air suction belt feed system with front and side air separation for consistent and reliable feeding of a wide range of paper and substrates. It offers a high stack feed capacity up to 15.7" (400 mm), a double feed detection sensor to detect when two or more sheets have been fed, and easy access to the air management system.

An optional sub-suction unit is available to aid in the feeding of thicker stocks.

APPLICATIONS



Short Run Packaging



Pocket Folders

Custom-Shaped Cards



AUTOMATIC SEPARATION

The DSM-1000 B2 offers a separation option that is unique as it relates to most other platen die cutters on the market. The unit includes three separation modules as standard with the option to add four additional modules. The position of each module is determined using the PC Controller, where the die cut file can be uploaded to allow the operator to identify the best activation points before manually adjusting them into place.

It automatically separates the exterior and interior waste from the finished application, deflecting the waste underneath. Only the finished pieces are delivered onto the standard stacking tray or the optional stacker conveyor.

Die Cutter

- Max 40 ton cutting pressure
- Max 5,000 mm steel rule (length)

Die Board Loading

- Easy access with quick load and lock system

Separator Unit (optional)

- Removes outer waste (blanking)
- Removes inner waste (stripping), without special tooling or dies
- Supports up to 7 separation modules

Stacking Conveyor (optional)

PC Controller

- User-friendly interface for setup and adjustments
- Stores an unlimited number of jobs for easy recall

Sheet Registration

- Ensures sheets are aligned prior to entering the die cut section
- Registration Mark Kit (optional) automatically adjusts sheet in X and Y directions for enhanced accuracy

B2 Feeder

- Max paper size: 20.8" x 29.5"
- Max paper weight: 600 gsm
- Max loading capacity: Up to 15.75" (400 mm)



Scan to watch the video

- Produces short-run packaging and custom-shaped jobs
- Steel rule dies designed to cut, crease, perforate, and kiss cut
- Automatically separates inner and outer waste from finished pieces with separation option
- Processes paper, laminates, adhesives, and synthetic stocks
- Supports B2 and B3 formats