

DC-746 SPECIFICATIONS	
Speed	Up to 50 sheets per minute (8.5" x 11" 2 cuts, 1 crease and CCD scanner off)
Input Paper Size	8.26" x 8.26" to 14.56" x 26.37" (210 x 210 mm to 370 x 670 mm)
Min. Finished Size	1.89" x 1.97" (48 x 50 mm)
Tolerance	±0.2 mm
Feeder Capacity	5.9" (150 mm)
Paper Weight	110-350 gsm
Slits	Up to 10 per sheet (6 standard slitter tools with 2 margin slitters and 4 center slitters. 2 optional slitter modules with 2 sets of slitters each can be added.)
Cuts	Up to 30 per sheet
Creases	Up to 20 per sheet
Memory	Up 250 jobs using the control panel
Options	<ul style="list-style-type: none"><li>• PC and PC Arm, 48" long conveyor stacker, and Integrated Folding System (IFS)</li><li>• RTM-04 Rotary Tool Module includes 2 each of perforation, micro-perforation, scoring, and slit-scoring tools. Up to 3 RTM-04s can be installed in the unit at one time, replacing slitter modules.</li><li>• CPM-04 Cross Perforation Module includes 1 each of perforation, micro-perforation, and slit-scoring tools.</li><li>• OSM-04 Slitter Module includes 2 sets of slitter heads. Up to 2 OSM-04s can be installed in the unit at one time.</li><li>• The OPK-02 PCB kit must be installed when using any of the optional modules but only one kit is needed to use multiple modules.</li></ul>
Power Requirements	115V, 60Hz, 5.2A
Dimensions (WxDxH)	104" x 40" x 44"
Net Weight	992 lb (450 kg)

DSF-20K SHEET FEEDER SPECIFICATIONS	
Input Paper Size	Width: 14.56" x 29.52" (370 x 750 mm)** Length: 14.56" x 29.52" (370 x 750 mm)** ** Paper can be fed Short Edge Feeding (SEF) or Long Edge Feeding (LEF)
Paper Type	Uncoated 110-400 gsm; Coated 110-400 gsm; Laminated Paper - Must be within the specification, including the Laminate Coating; UV Coated Paper - Must be within the specification, including the UV Coating
Paper Loading Capacity	Up to 10"
Processing Speed	Up to 1,500 sheet per hour, 25 sheets per minute
Paper Curl Volume	5 mm or less
Power Requirements	100-240V, 50/60Hz, 8A
Dimensions (WxDxH)	39" x 50" x 50"
Net Weight	692 lb (314 kg)

Production rates are based on optimal operating conditions and may vary depending on stock and environmental conditions.  
As part of our continuous product improvement program, specifications are subject to change without notice.



The leading provider of innovative precision finishing, print embellishment, and specialty finishing solutions.  
Contact us today to request samples or to get in touch with a finishing specialist.

Duplo USA Corporation

3050 S. Daimler St.  
Santa Ana, California 92705  
Toll Free: 1-800-255-1933  
Telephone: 1-949-752-8222  
Email: sales@duplousa.com

DC-20000 B2 CUTTER/BRIDGE SPECIFICATIONS	
Input Paper Size	Width: 14.56" x 29.52" (370 x 750 mm) Length: 14.56" x 29.52" (370 x 750 mm)
Finishing Size	Minimum Length: 7.48" (190 mm) Maximum Length: 14.56" (370 mm)
Paper Type	Uncoated, Coated, Laminated, UV Coated
Paper Weight	110-400gsm *Laminated/UV Coated Stock: Within the above range including laminated/coated layer
Transport Speed	Up to 4.92 feet per second
Maximum Cuts	Up to 6 cuts per sheet
Minimum Cut Length	15 mm (Lead Cut), 10 mm (Gutter Cuts), 10 mm (Trail Cut)
Paper Curl Volume	5 mm or less
Tolerance	±1.0 mm *Finishing Tolerance complies with the specifications on DC-746
Processing Speed	Up to 9.5 sheets per minute (when processing 20.86" x 28.34" sheets with 2 cuts)
Standard Functions	80 Job Memory, Job Lock, Test Feed, Preset Counter, Double Feed Detection, Emergency Stop Switch, Apply Shrinkage, Program by inch/mm, Job Position Correction, Sheet Thickness Setting, Cut Test, PDF Template Creator, XML File Creator, PC Controller
Power Requirements	115V, 60hz, 25A (Require to use 25A or higher power plug and need to connect to a power capacity line of 25A or higher.)
Dimensions (WxDxH)	58" x 50" x 68"
Net Weight	721 lb (327 kg)

DC-ST3 CONVEYOR STACKER SPECIFICATIONS	
input Paper Size	Width: 1.88" x 14.56" (48 x 370 mm) Length: 1.96" x 5.9" (50-150 mm) ** For cards smaller than (W) 60 mm x (L) 60 mm, optional Card Guides (Y5-S0001) are required
Paper Type	Coated, Non-Coated, Laminated, UV Coated
Paper Weight	100-400 gsm
Operation Mode	DC In-Line Operation, Off-Line Operation
Conveyor Belt	Belt Width: 15.78" (400 mm), Stacking Length: 47.24" (12 mm) ** Capacity Reference: 3 x LEF Business Cards: approx. 1,590 cards (with 3 mm gap)
Height Adjustment	Manual: 32"-40" (820-1,200 mm)
Speed Adjustment	DC Inline Operation: 5 Steps on DC Control Panel Offline Operation: Step Adjustment with Rotary Knob (5-50 mm/sec)
Side Guides	4 (3 Rows), can be increased up to 7 (6 Rows) by installing optional side guides
Power Requirements	100-240V, 50/60Hz, 0.23-0.13A
Dimensions (WxDxH)	59" x 26" x 43" when connected with DC-746
Net Weight	163 lb (74 kg)

Find Us Online

- duplousa.com
- linkedin.com/company/duplo-usa-corporation
- facebook.com/duplousa
- twitter.com/duplousa
- youtube.com/duplousa

Duplo

DC-746 B2  
Slitter/Cutter/Creaser



All-In-One Finishing for B2 Output



## DC-746 B2 Slitter/Cutter/Creaser

Process output from your B2 digital devices and finish them on demand with the Duplo DC-746 B2 Slitter/Cutter/Creaser. The DC-746 B2 integrates the DSF-20K B2 Feeder and DC-20000 B2 Cutter/Bridge Unit with the all-in-one DC-746 Slitter/Cutter/Creaser, expanding your capabilities to turnaround jobs with better accuracy and efficiency.

As print runs continue to get shorter many print providers are looking to maximize the sheet size and implement a workflow that keeps productivity high and costs low. The DC-746 B2 turns flat sheets with multiple-up impositions into finished pieces that are slit, cut, creased, scored, and perforated in a single pass. Get creative with wider formats such as oversized direct mailers, brochures, book jackets, and more.



Air Suction Feed System



### ONE TOUCH OPERATION

Reduce downtime by eliminating time-consuming set ups and make-ready times. With the DC-746 B2, a single operator can program both devices from a PC station using the PC Controller.

The intelligent software optimizes the sheet size and recommends imposition layouts based on the parameters entered to make job preparation easier. Program the DC-20000 B2 Cutter to cut the B2 sheet into two or three smaller sheets. The DC-746 Slitter/Cutter/Creaser automatically sets for multiple-up finishing. A maximum of 10 slits, 30 cuts, and 20 creases can be applied. Jobs can be stored in memory to quickly recall when needed.

Add the B2 registration mark to the large sheet to ensure cutting accuracy on each divided sheet. Apply a second set of standard registration marks to each layout that will be finished on the DC-746.



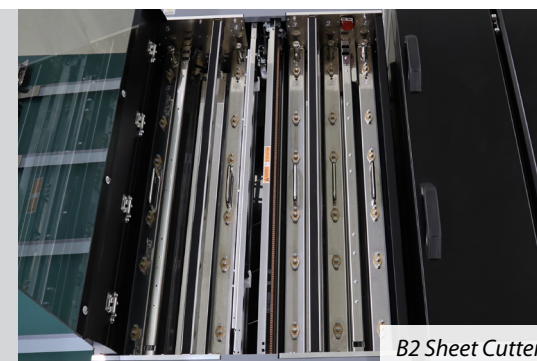
DC-746 B2 Slitter/Cutter/Creaser



### B2 FEEDING & CUTTING

Automating the feeding of B2-sized sheets provides a smooth operation. The DSF-20K B2 Feeder features an air suction, top feed system that handles both Short Edge Feed (SEF) and Long Edge Feed (LEF) with equal ease. A high-capacity feed tray, front and side air adjustments, and a double feed detection sensor offers reliable feeding throughout production.

As each sheet is fed, the DC-20000 B2 Cutter utilizes a rotary slitter to cut across the sheet. The built-in scanner can be used to read the B2 registration mark and automatically adjust for any image shift that may have occurred. Cut sheets are carried and aligned on the 90 degree transport conveyor then suction fed into the DC-746 for full-bleed finishing.



B2 Sheet Cutter



Turn Conveyor



### PERFORATING & SLITTING OPTIONS

The DC-746 can be made even more versatile by adding up to three perforating and slitting modules. The tools are equally automated and position into place. The Rotary Tool and Cross Perforation Modules can perform strike perforations and be combined to create coupons and reply cards with T- or L-shape perforations.

- Rotary Tool Module performs perforations, micro-perforations, scores, and slit-scores across the length of the sheet.
- Cross Perforating Module performs perforations, micro-perforations, and slit-scores across the width of the sheet.
- Up to two extra Slitting Modules with two sets of slitters each can be added to process a maximum of 10 slits per sheet.



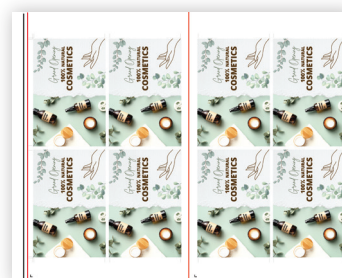
### MODULAR DESIGN

The modular design allows the DC-746 to be used as a stand-alone unit for smaller format jobs up to 14.56" x 26.37". It also makes it economical for existing DC-746 owners to add-on the DSF-20K B2 Feeder and DC-20000 B2 Cutter/Bridge Unit to support their digital press investment.



### APPLICATION WORKFLOW

- 1 DC-20000 B2 Cutter divides B2 sheet into 2-3 sheets, depending on imposition layout.
- 2 Each sheet is individually finished on the DC-746 Slitter/Cutter/Creaser.



- 3 Finished postcards



Scan to watch the video

- All-in-one finishing for B2-sized formats
- Eliminates touchpoints and cuts job costs
- Optimizes multiple-up imposition layouts
- Removes margins/gutters and prevents cracking
- Creates custom T- and L-shape perforations