



Duplo

DPC-2024 Digital Die Cutter

DOCUCUTTER DPC-2024 SPECIFICATIONS

AUTO FEED

Feeder Capacity	Up to 50 mm
Feeding System	Automatic suction feeder
Sheet Size	Min. 8.5" x 11" / Max. 20.87" x 29.53"

VINYL ROLL FEED

Max. Roll Width	24"
Max Cutting Area (WxL)	21 inches x 19.68 feet
Min. Cutting Length	2"

CUTTING CONTROL

Cutting System	Plotter Cutter
Max. Cutting Speed	1,530 mm/second (60 ips at 45 degree direction)
Cutting Thickness	350 gsm
Cutting Tolerance	± 0.1 mm
Cutting Force	5 - 600 g

SOFTWARE AND CONNECTION

Software (platform)	DPC-2024 Windows driver (Adobe Illustrator Plug-in) and Flexi 19
File Format	PDF
Network	USB 2.0 (Full Speed), Serial (RS-232C) and Ethernet

GENERAL

Standard Features	4 tools (green cap blade, scoring pen, red cap blade, and cut off blade), Flexi 19 software and DPC-2024 Windows driver (PC sold separately), 2-roller attachment, feed and receiving trays, waste basket, stands
Safety	ETL / cETL certified
Power Requirements	Cutter: 100-240 VAC, 3.0 A, 50/60Hz Feeder: 100-240 VAC, 2.1A, 50/60HZ
Dimensions (LxWxH)	65" x 43" x 49" (1,651 mm x 1,092 mm x 1,245 mm)
Net Weight	Cutter: 56 lb / 25 kg Feeder: 49 lb / 22 kg Stand/Catch Tray: 88 lb / 40 kg

Production rates are based on optimal conditions and may vary depending on stock and environmental conditions.




Duplo

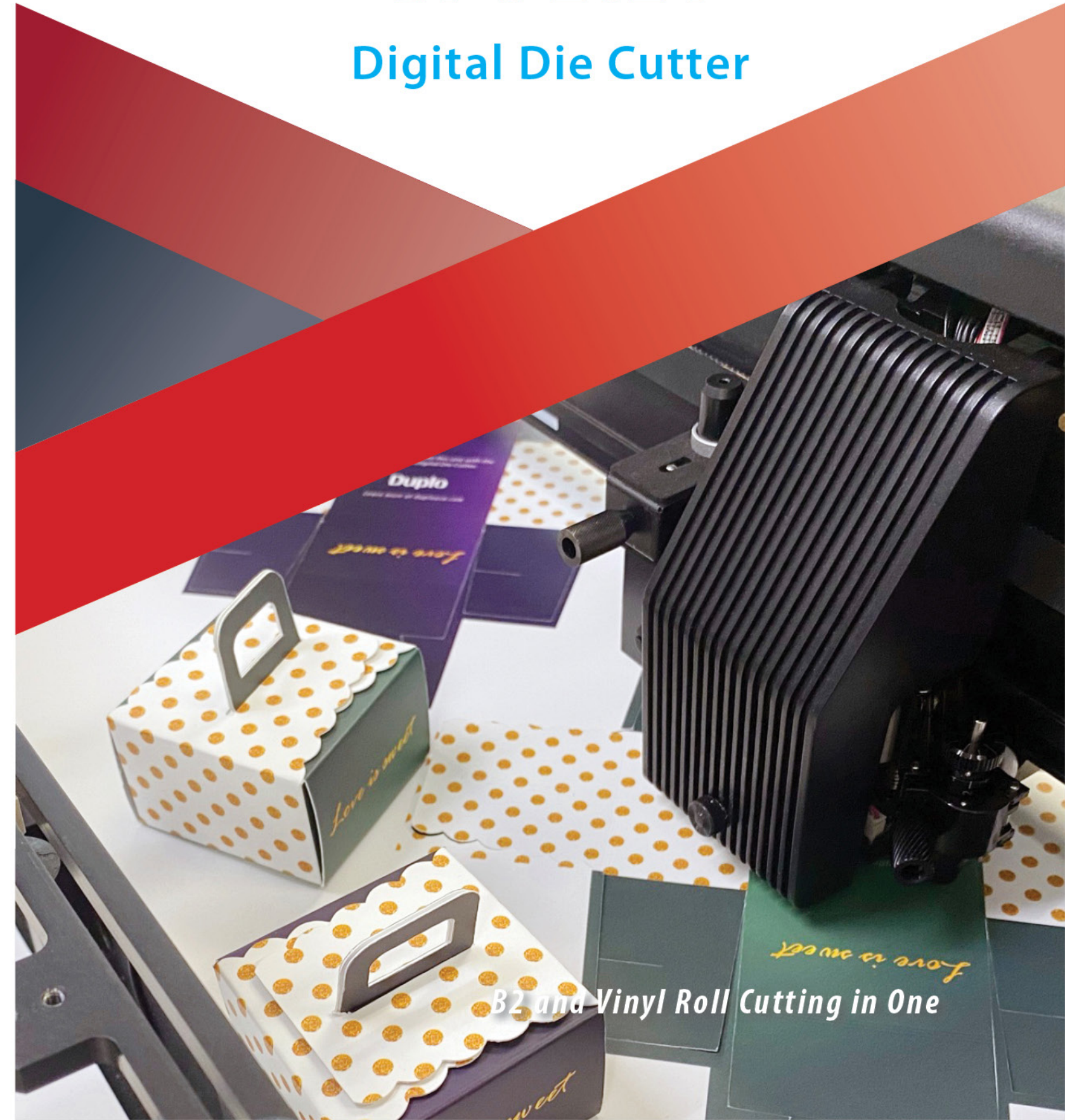
The leading provider of innovative precision finishing, print embellishment, and specialty finishing solutions. Contact us today to request samples or to get in touch with a finishing specialist.

Duplo USA Corporation

3050 S. Daimler St.
Santa Ana, California 92705
Toll Free: 1-800-255-1933
Telephone: 1-949-752-8222
Email: sales@duplousa.com

Find Us Online

-  duplousa.com
-  [linkedin.com/company/duplo-usa-corporation](https://www.linkedin.com/company/duplo-usa-corporation)
-  [facebook.com/duplousa](https://www.facebook.com/duplousa)
-  twitter.com/duplousa
-  [youtube.com/duplousa](https://www.youtube.com/duplousa)



B2 and Vinyl Roll Cutting in One

DocuCutter DPC-2024 Digital Die Cutter

The entry-level DocuCutter DPC-2024 Digital Die Cutter combines its capacity to support oversize B2 sheets with 24" vinyl cutting technology into one system.

Produce packaging, pocket folders, labels, and decals on demand. The DPC-2024 cuts, kiss cuts, and scores a variety of substrates including paper, laminates, and adhesive stocks up to 350 gsm as well as processes vinyl roll-to-sheet applications. It's a compact, versatile and economical solution for creating samples and short-run jobs.



B2 CUTTING

Create short-run packaging, pocket folders, and many more applications with the capability to accommodate large formats up to 23" x 31" in size. With the DPC-2024, each sheet is guided back and forth on the cutting pad by three multi-pressure pinch rollers as the dual tooling head follows the pattern drawn on the cut file. A cutting knife and scoring pen are included to process offset and digitally printed jobs. Set them to cut shapes, kiss cut labels, and score fold lines on folded pieces. *Lamination may be required to prevent cracking.

The DPC-2024 features the Automatic Aligning System (AAS) to detect registration marks on each corner of the sheet for accurate contour cutting. The automatic feeder utilizes fans to aid in separation as each sheet is suction fed. Both feed and delivery trays are adjustable to support various media sizes.



VINYL CUTTING

Custom vinyl applications, such as adhesive decals and floor graphics, remain popular for advertising a brand or local business and can become a profitable addition to your growing list of offerings. In addition to paper stock, the DPC-2024 handles 24" media widths and creates intricate lettering with ease. Each job is transformed from roll-to-sheet, eliminating the task of cutting the roll manually when finished.

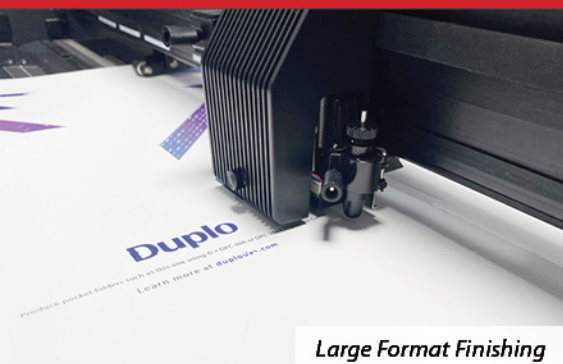
A vinyl cutting knife and two-roller attachment also come standard and can be installed with minimal downtime when you need to change over. With the feed and tray units set to the side, the two-roller attachment is inserted at the front of the machine. Add the holders to the core and place the vinyl roll on the attachment then load the edge to begin cutting.



JOB PREP AND SETUP

For paper cutting, the DPC-2024 Windows driver provides the flexibility to control the machine from your computer via USB, LAN, or serial ports. Add the driver to your Adobe Illustrator or CorelDRAW program then create the cut file to outline the cuts, kiss cuts, and scores to be performed over the printed artwork. Use the driver to add registration marks on each corner of the print file, adjust the cutting pressure and speed, create job profiles, and calibrate. With the printed sheets loaded on the feed tray, you can send directly to the cutter by clicking Print on your vector program.

For vinyl cutting jobs, the DPC-2024 utilizes the Flexi 19 software. Use it to upload the cut file in PDF, impose your artwork, and initiate production.



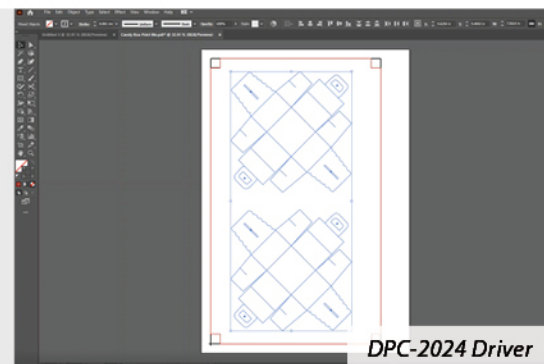
Large Format Finishing



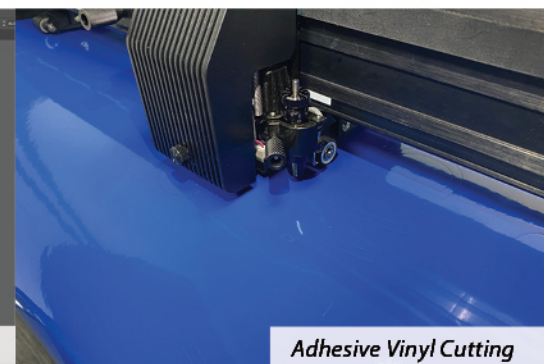
Adjustable Feed and Receiving Trays



DocuCutter DPC-2024 Digital Die Cutter



DPC-2024 Driver



Adhesive Vinyl Cutting



Vinyl Roll Feeder

APPLICATIONS



Pocket Folders



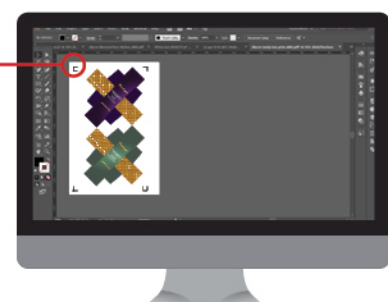
Packaging



Custom Decals



For accuracy, the print file requires four registration marks on each corner. Add them using the DPC-2024 Windows driver.



STANDARD TOOLS

TOOLS	DESCRIPTION
Green Cap Blade	For paper and adhesive stock up to 350 gsm
Scoring Pen	For paper up to 350 gsm
Red Cap Blade	For standard vinyl rolls
Cut Off Blade	For cutting vinyl roll-to-sheet



Scan to watch the video

- Creates custom, short-run jobs on demand
- Digitally cuts, kiss cuts, and scores
- Easy changeover from paper to vinyl cutting
- Processes paper, laminates, and adhesive stocks plus vinyl roll-to-sheet
- Automated feeding and dual tooling head

